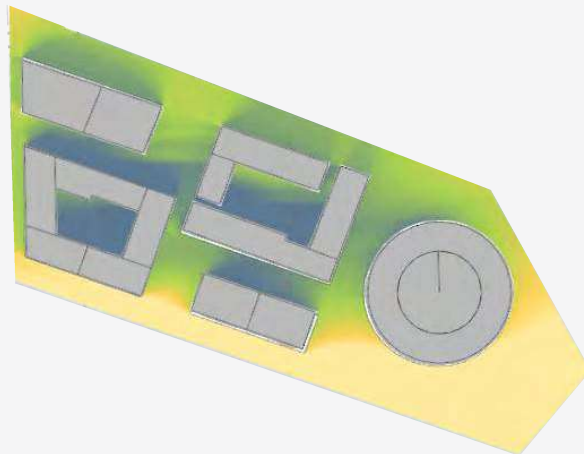


Solskinstimer
Gennemsnitlige solskinstimer
jævndøgn (21. Marts)

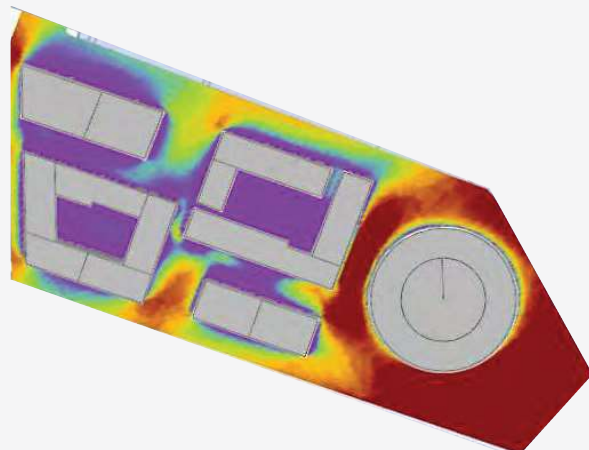


Potential daily sunshine hours (clear sky) (h)

10	Very high sun exposure
9	
8	
7	High sun exposure
6	
5	
4	Fairly small sun exposure
3	
2	
1	Limited sun exposure
0	

+

Vindkomfort
Årlig vindstatistik simuleret
over 12 vindretninger



% of annual hours, where the hourly mean wind speed exceed 5 m/s

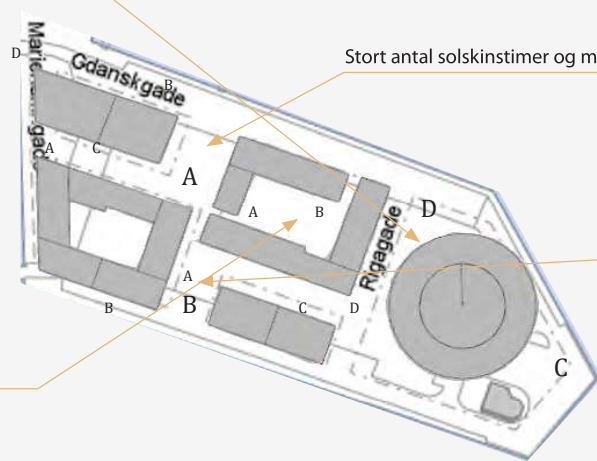
NEK 8100
Wind comfort
Quality Class

Suitable activities

A	< 2.5%	Sitting long
B	< 5%	Sitting short
C	< 10%	Strolling
D	< 20%	Walking fast
E	> 20%	Poor wind climate

=

Vindblæst hjørne samt få solskinstimer



Stort antal solskinstimer og minimale vindhastigheder

Stort antal direkte solskinstimer.
Beplantning mod kanalen vil optimere vindforholdene.

Gode læforhold samt formiddagssol